	Form: DIGITAL SPECS.	ISO Element #:4.9
	Document Control #: 1674 Revision: 1.1 Effective Date: Dec./04 Department: Sales/CMT	Ref. Procedure: #213 Supersedes: 1653 & 1654 File Name: 1674.doc. Page 1 of 12

Digital File Submission Specifications

These specifications have been developed by St. Joseph Printing for the efficient output of electronic files to our computer-to-plate system. Should you have any questions or concerns with these specifications please contact our PrePress Manager, Steve Ostiguy @ (905) 660-3111 Ext. 262.

Test files are required if this is the first job being run at St. Joseph Printing Concord. These files will be processed by the PrePress department and checked against the supplied proof. If adjustments are required, new files must be submitted. When files are acceptable the job may be submitted for processing.

GENERAL FILE SPECIFICATIONS

- Record files on Mac formatted media: CD-ROM or DVD-ROM
- Label media with the following information;
 - Company Name
 - Customer Name
 - Job Name and include a Job Profile Sheet
 - Printed Directory of media supplied
- File name must include page number, language and zone
- Any customer corrections made to the proofs must be saved with a revised filename e.g., _rv1, _rv2 etc.
- **Send a copy of your final files only**

DOCUMENT CONSTRUCTION

- Preferred document set-up is equal to trim size of finished piece
- If this is not possible document size should be 1" larger than trim size (this allows consistent offsets during imposition)
- Adhere to: Minimum of 1/4" type safety from trims
 - Minimum 1/8" bleeds on documents
 - Page orientation must be portrait
 - Trim marks and registration should be offset minimum 12 pts

FILE FORMATS

- PDFs – created with SJP settings (see attached sheet) or PDF X-1A
- Native Applications – Quark Xpress, InDesign and PageMaker
- CT/LW
- TIFF/IT P1
- DCS
- PreSeparated .PS

IMAGES / COLOURS

- Save images as TIFF and EPS only
- **ALWAYS** high resolution images directly in the Xpress/PM files
- If placing low resolution images, name them identical to their high resolution counterparts (Do not send SJP the low resolution images)
- Avoid file compression of images
- Do all special colour conversions to CMYK where applicable, including all TIFF and embedded EPS files 5th, 6th, 7th colours must be set to spot colour within the EPM program
- Delete unused colours from the colour palettes of both the illustration files and the page layout file

PROOFING

- Digital colour proofs should be calibrated to dMACs/SWOP/GRACoL standards (www.swop.org/certification.html).
- Include colour bars on proof. Minimum 25%, 50%, 75% and solid for each colour.
- Send SAME SIZE (100%) digital colour proof produced from the actual files. Include bleeds and trims.
- All hard proofs must contain the following information:
 - Job Name
 - File Name
 - Zone
 - Language
 - Page Number
 - Trim Size
 - Bleed Size
 - Date
- Conventional proofs can be supplied, provided that the film produced to make the proof and/or plates is from the same file sent to the publisher/printer. If this is not possible, a digital proof must be supplied along with the conventional proof to verify the file content.
- Send black and white laser proof for all black zone changes.

PRINTING GUIDELINES:

SWOP

(SPECIFICATIONS FOR WEB OFFSET PUBLICATIONS)

Paper	Line Screen	TAC/UCR	Solid Ink Density (as measured by SJP)				Total Dot Gain +/- 4%				Print Contrast +/- 5pts.			
			K	C	M	Y	K	C	M	Y	K	C	M	Y
Publication Grade stock	133	300	1.55	1.27	1.32	0.88	22	20	20	18	38	35	35	25

GRACoL

(GENERAL REQUIREMENTS FOR APPLICATIONS IN OFFSET LITHOGRAPHY)

Paper	Line Screen	TAC/UCR	Solid Ink Density				Total Dot Gain +/- 4%				Print Contrast +/- 5pts.			
			K	C	M	Y	K	C	M	Y	K	C	M	Y
#1/#2 Premium Coated	175	320	1.70	1.40	1.50	1.05	22	20	20	18	40-45	35-40	38-40	30-35
#1/#2 Premium Matte	150-175	300-320	1.60	1.30	1.40	1.00	24	22	22	20	40-45	35-40	38-40	30-35
Premium Text and Cover	150-175	260	1.30	1.15	1.15	0.90	26	22	22	20	35-45	30-40	30-40	25-35
#3/#4 Coated	133	300	1.60	1.30	1.40	1.00	26	22	22	20	35-45	30-40	30-40	25-35
SCA/SCB/SCC	120-133	240-260	1.40	1.15	1.20	0.95	28	26	26	24	23	21	21	20
Uncoated Offset	110	240-260	1.25	1.00	1.12	0.95	28	26	26	24	20	17	16	17
Newsprint	85	240	1.05	0.90	0.90	0.85	32	30	30	28	16	13	12	15
Newsprint (Heatset)	100	240	1.20	1.08	1.15	0.95	35	32	32	30	16	13	12	15

MISCELLANEOUS

- Include a printed directory listing all files on disk (e.g., page files, image files, fonts, logo, etc.)
- Include a contact name and phone number.
- Screen angles, dot shape, and line screen are determined by the printer at the plate making stage.
- Minimum trapping .003"
- Minimum tint values intended to print should maintain a 5% dot. Although, digital processes can maintain lower printed values (e.g. 3%), consultation with the printer and prepress service provider is recommended prior to use of these lower values.
- Two colours solid overprints larger than 3 mm square should have one of the colours screened to a maximum of 70% to optimize wet ink trapping.

- Reversed lettering should be reproduced in a minimum of colours. Avoid small sizes (under 8 pt.) or light type faces. Small letters, fine serifs and thin lines are not practical but if used should be restricted to one colour. Use a tint of not more than 30% coverage for the background where type is surprinted, not less than 70% coverage where type is reversed to ensure legibility.
- It is advisable when designing crossover pages, that the spine or gutter break, is positioned between words. It is not recommended to split words or letters through the spine or gutter due to manufacturing variations.
- Undercolour Removal (TAC/UCR) should be used so that the total area coverage in the darkest areas will not exceed (see Printing Guidelines) for FOUR-COLOUR material. Only one solid should be used in areas comprised of two or more colours. Maximum screened value of any one colour should not exceed 85%, unless it becomes the solid colour (to avoid mottle in areas of flat tint colour).
- Gray Component Replacement (GCR) if used, should not exceed 75%.
- Ink hues conform to MAC (SWOP) standards
- Ink sequence K, C, M, Y

NATIVE APPLICATIONS

PAGE ASSEMBLY

- Build pages in MacOS QuarkXPress (we support the latest version)
- Send application files only (e.g., QuarkXpress, Illustrator, PhotoShop, etc).
- Supply single pages as individual files. Break crossover pages into 2 pages
- Ensure scanned images have been cropped and rotated prior to placement within the page layout document
- Do not enlarge scanned images beyond 110% within the page layout program
- Do not use a predefined "hairline rule" within the application programs, instead define hairline rules as 0.25 pt. rule width.
- Do not build frames or borders using rules

FONTS

- Use PostScript Type 1 and 3 only (no TrueType fonts)
- Include all screens (the font suitcase) and printer fonts used in all files (including all fonts used in illustrator and Freehand). St. Joseph Printing assumes the responsibility to maintain licenses for all fonts used in output.
- Do not use bold, italics or other style attributes in your EPM program use the proper font for the characteristic you want on the output.

RASTER FILE FORMAT SPECIFICATIONS

- Copy only CT/(N)LW and FP files on disk
- Pre-trap all files
- Send CT/(N)LW and page files for all zone splits

Send a copy of your final files only

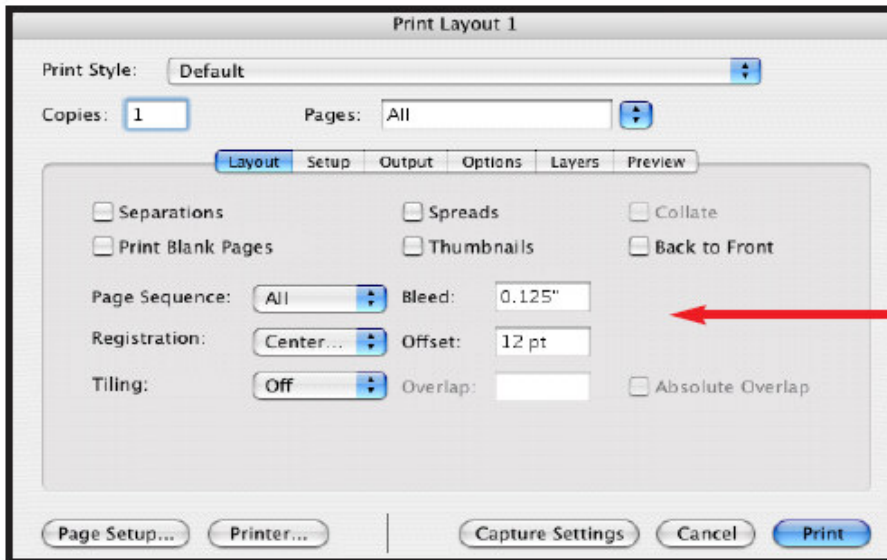
- Record TIFF/IT P1 files on Mac formatted media.
- CD-ROM or DVD-ROM
- If using any other file format not listed in TIFF/IT P1 specs, please contact Steve Ostiguy, PrePress Manager
- At this time, TIFF/IT P1 does not directly support any compression
- Check TIFF/IT P1 file format using TIFF/IT P1 PreFlight software available through the DDAP Association (Digital Distribution of Advertising for Publications)
Tel: (781)639-7786 or www.ddap.org

SCITEX CT/(N)LW

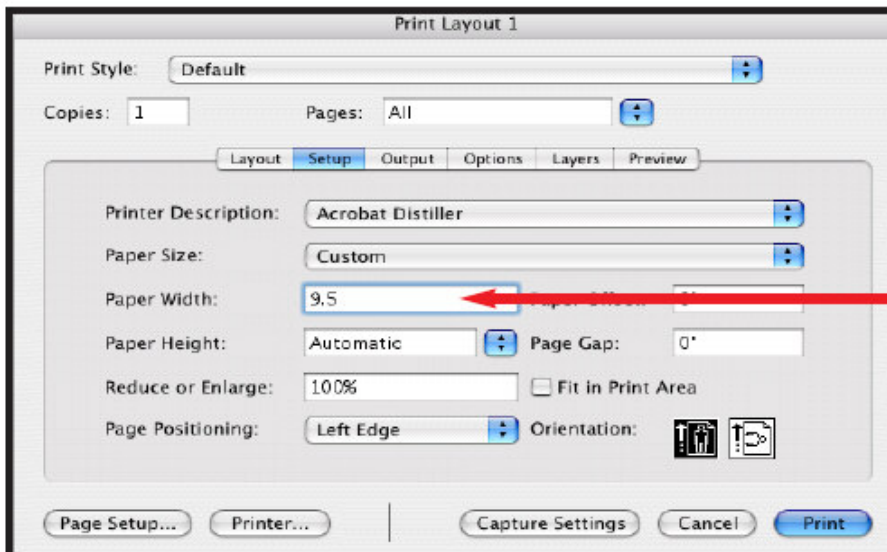
- Record Scitex CT/NLW to any media listed above
- Format native Scitex CT/LW files RMX format only
- Whisper station. (Do not format disk with UFS or UFS2 on the Mac.) Mac formatted media over SCINET span to Mac and save on any media listed below
- Brisque files to be sent as .job folders
- Label media with company name, customer name, and job name
- Send CMYK composite CT/(N)LW and final page (FP) files. The FP should contain a preview of the final page
- The CT/(N)LW and FP must all be named the same
- The (N)LW resolution should be equal to the Creo Platesetter resolution which is **2,400 dpi** or an integer fraction thereof (e.g. 1/2, 1/3, 1/4)
- The CT resolution can be any regularly-used value
- The (N)LW height and width resolutions should be equal
- Verify the LW files using the Check LW and Compress utilities on Scitex Systems
- CT from Brisque should be set to 0, 0 offset

CREATING POSTSCRIPT FOR PDF OUTPUT FROM QUARK 6.5

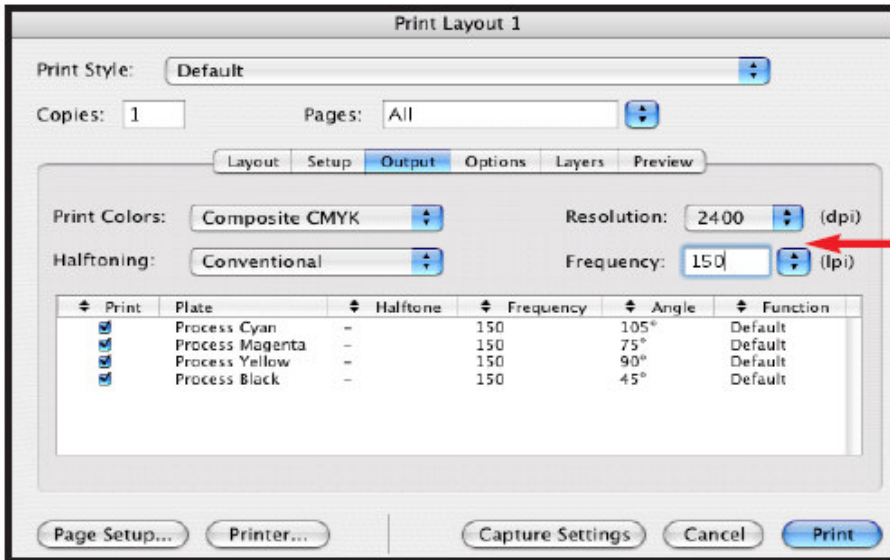
Below you will find the following specifications and settings that we use to create Postscript from Quark 6.5 to create PDF files only.



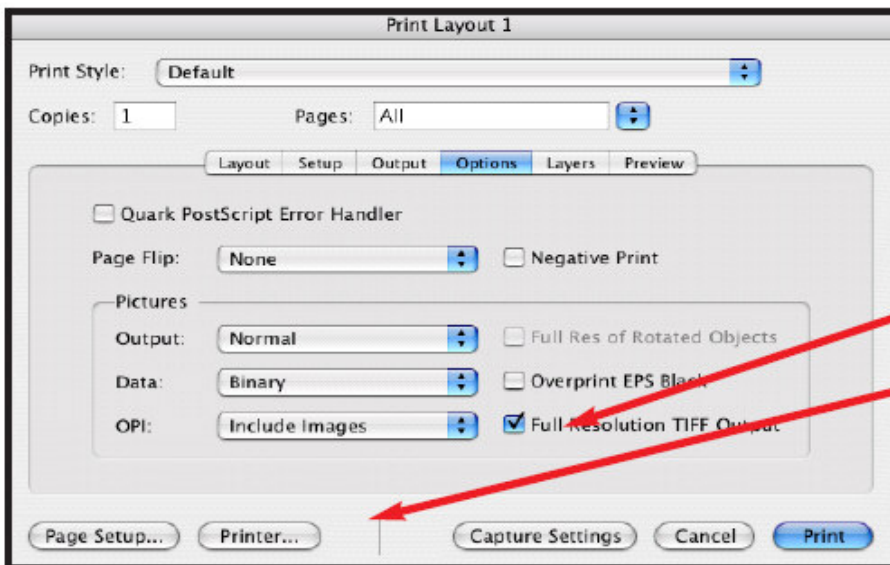
Bleed .125
Offset 12pt.



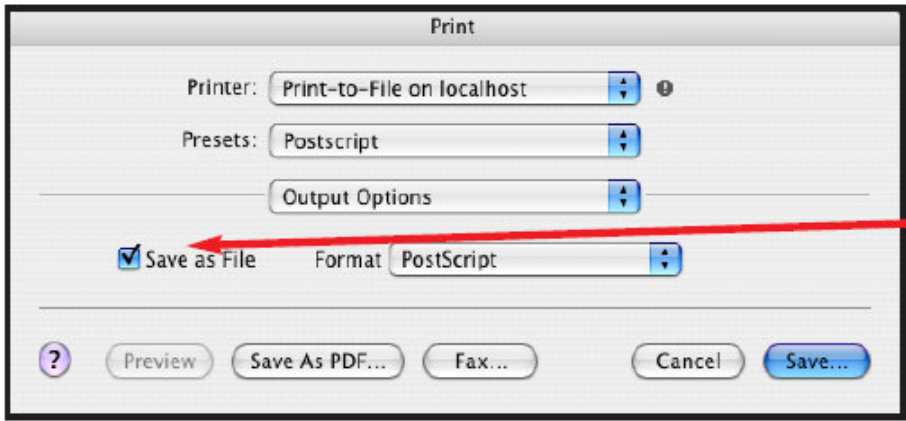
Always set paper width 1"
larger than final trim size.



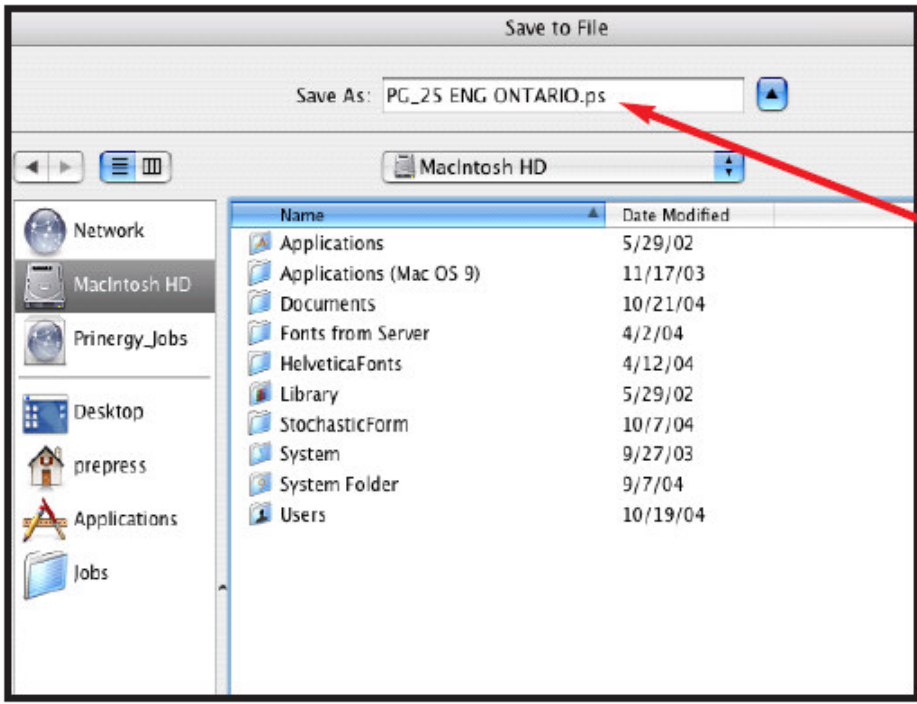
Set resolution and frequency at 2400 and 150 LPI



Make sure and select
Then select printer



Save as File
Format - Postscript



Save As - with page number, version and language.
(Please keep character limit to no more than 14.)
Save out one page at a time.
This way jobs are organized, especially when we are dealing with zone splits, different versions and languages.

How to create a Postscript Printer on OSX

STEP 1

Configuring Printer List:

- Select IP Printing
- Printer Type: LPD/LPR
- Printer Address: localhost
- Queue Name: Postscript
- Printer Model: Prinergy Refiner

The screenshot shows a dialog box titled "Configuring Printer List" with the following fields and options:

- IP Printing:** A dropdown menu with "IP Printing" selected.
- Printer Type:** A dropdown menu with "LPD/LPR" selected.
- Printer Address:** A text field containing "localhost". Below it, the text "Complete and valid address." is displayed.
- Queue Name:** A text field containing "Postscript". Below it, the text "Leave blank for default queue" is displayed.
- Printer Model:** A dropdown menu with "Prinergy Refiner" selected.

At the bottom right of the dialog, there are two buttons: "Cancel" and "Add".

CONFIGURING ACROBAT DISTILLER 6.0

Note: Convert all files in Distiller **NOT** PDF Writer

STEP 1

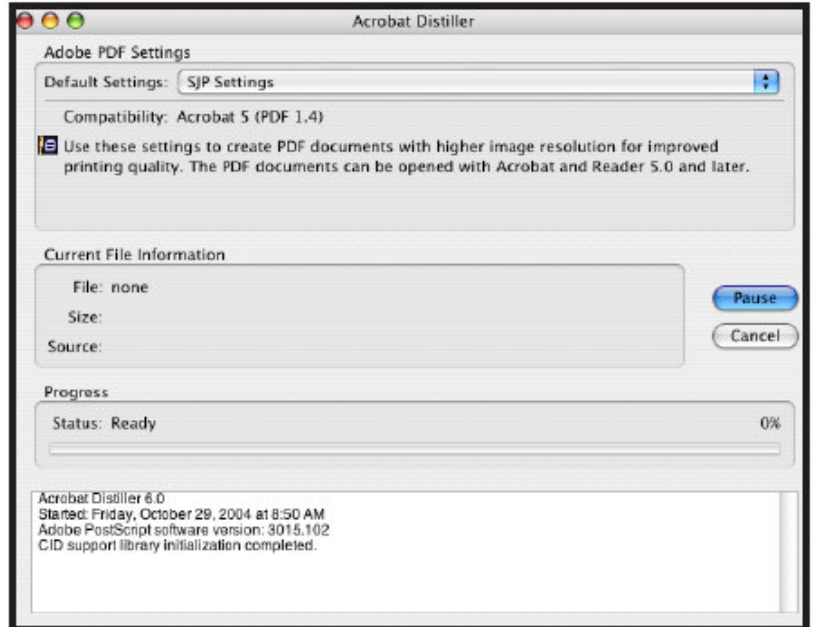
Create Postscript from Quark:

-Write Composite .PS and Include all high resolution images and include all fonts.

STEP 2

Launch Acrobat Distiller:

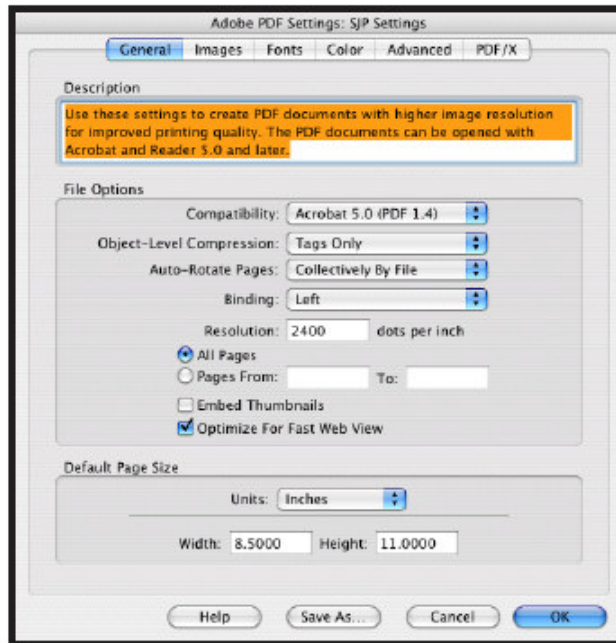
-Select Adobe PDF Settings from Menu



STEP 3

General :

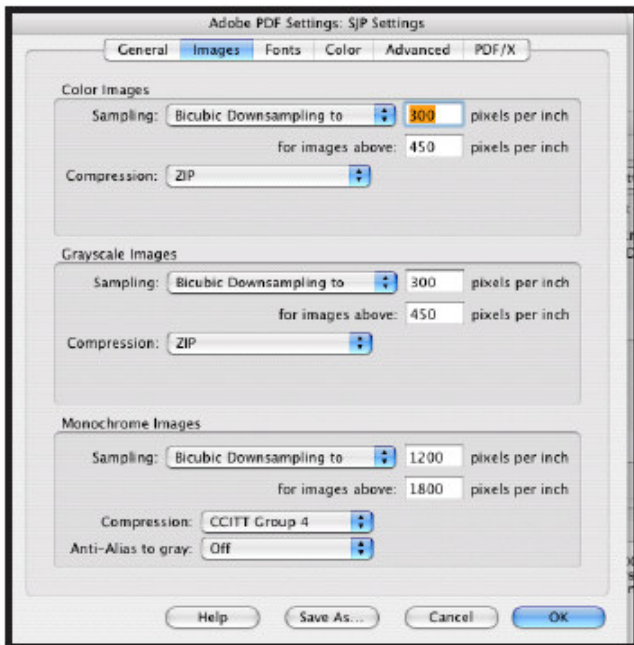
- Compatibility Acrobat 5.0
- Optimize PDF
- Resolution 2400 DPI
- binding left
- Enter page size (e.g. 8.5 x 11.0)



STEP 4

Compression :

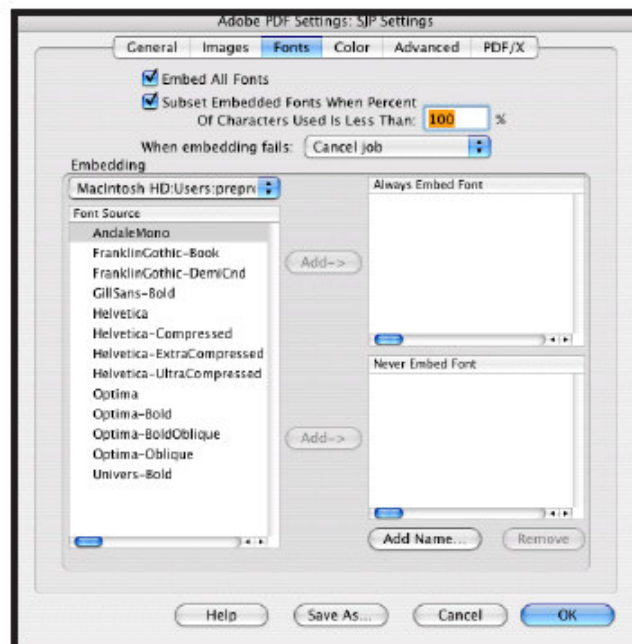
- Downsample Bicubic
- Select compression method zip
- For color images and grayscale images 300 pixels per inch for images above 450 pixels per inch
- For Monochrome images 1200 pixels per inch for images above 1800 pixels
- Select compression, CCITT Group 4



STEP 5

Fonts :

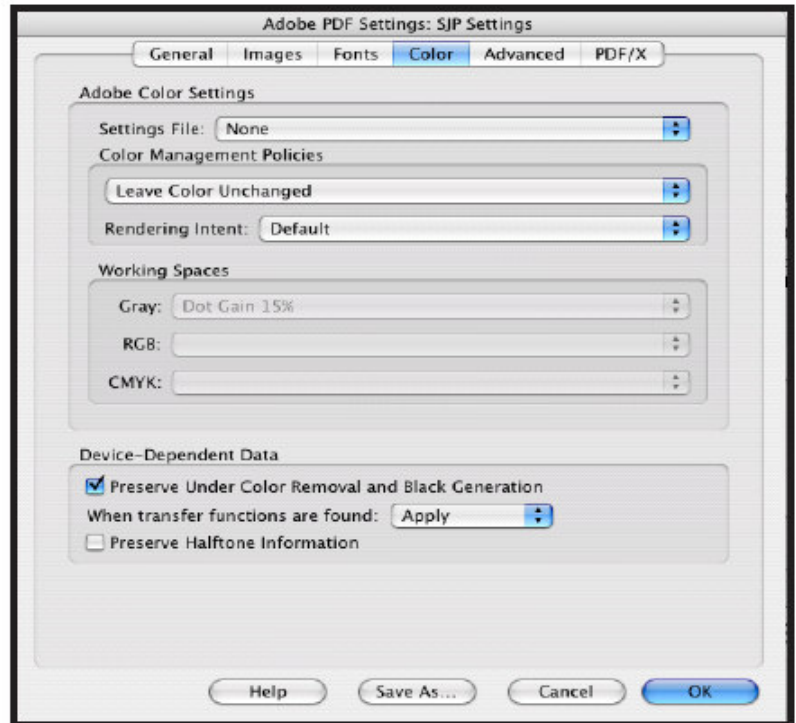
- Embed all fonts
- Subset fonts below 100%
- When embedding fails, cancel job



STEP 6

Color :

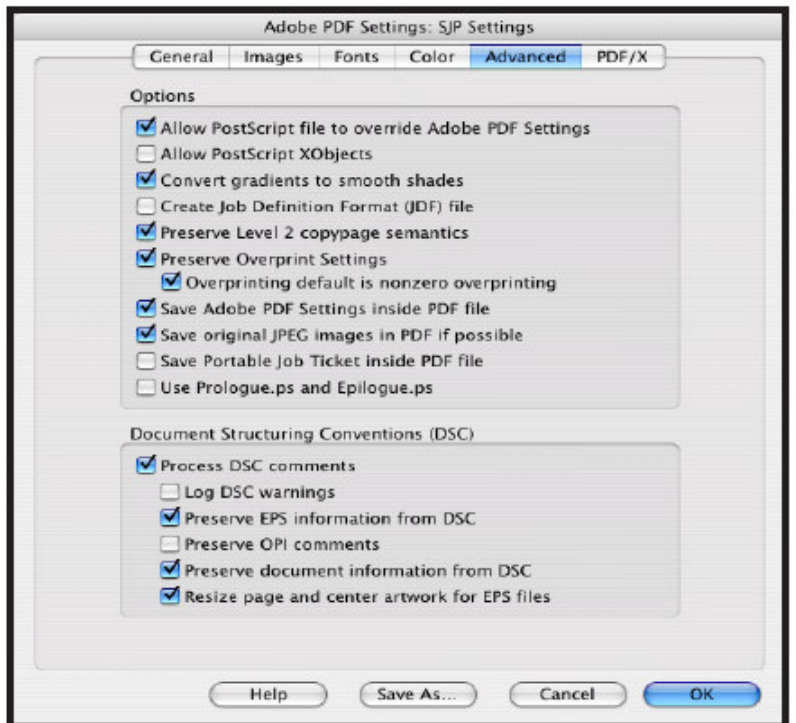
- Settings File: None
- Leave Color Unchanged
- Rendering Intent: Default
- Preserve Under Color Removal and Black Generation
- Apply Transfer function



STEP 8

Advanced:

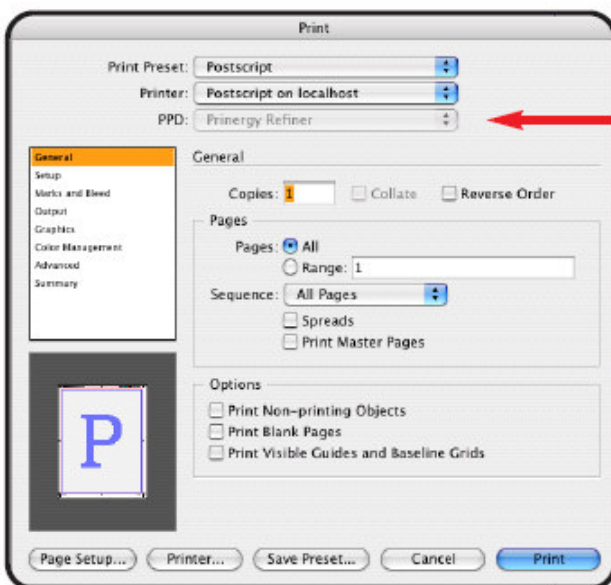
- Allow Postscript file to override Adobe PDF Settings
- Convert gradients to smooth shades
- Preserve Level 2 copypage semantics
- Preserve Overprint Settings
- Save Adobe PDF Settings inside PDF file
- Save original JPEG images in PDF if possible
- Process DSC comments



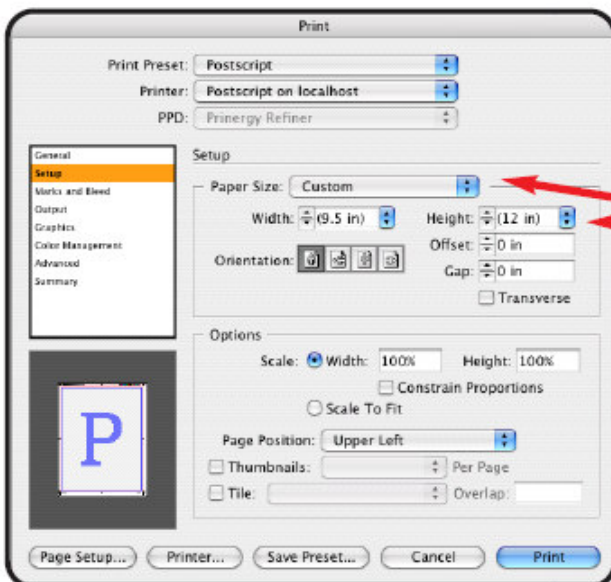
These specifications have been developed for the effective output of electronic files to our computer-to-plate system.

CREATING POSTSCRIPT FOR PDF OUTPUT FROM INDESIGN CS 3.0.1

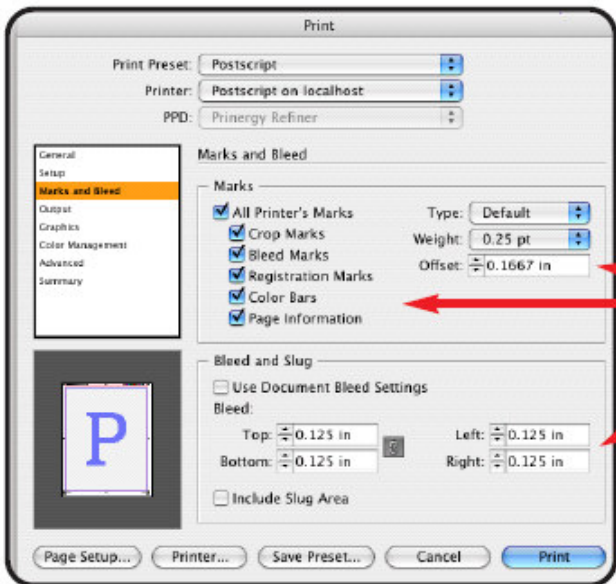
Below you will find the following specifications and settings that we use to create Postscript from InDesign CS 3.0.1 to create PDF files only.



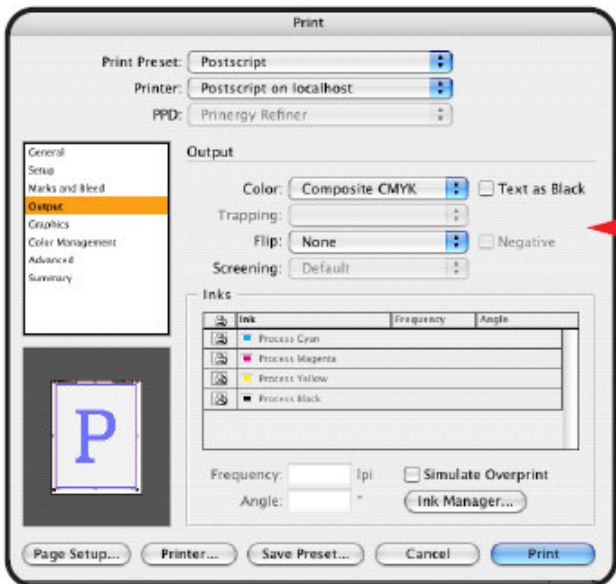
Select Prinergy Refiner for the PPD



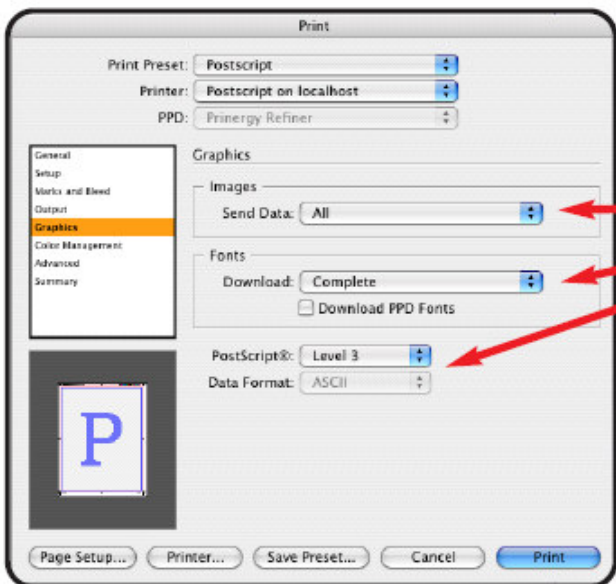
Paper Size - Custom
Width and Height should always be
1" larger than document size



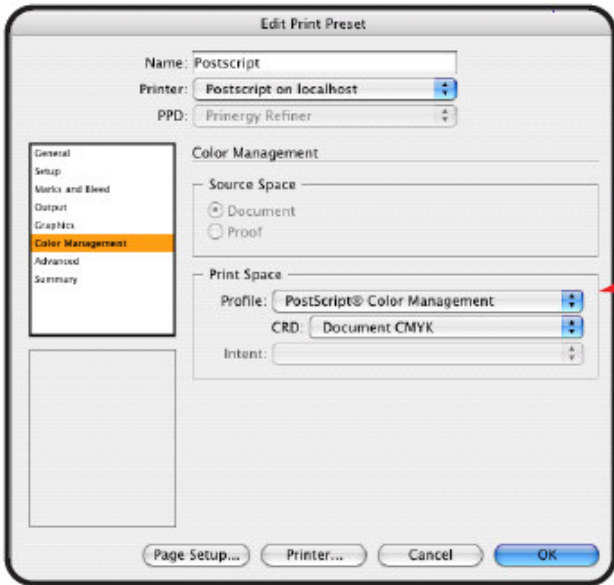
Printer Marks on, Offset 12 pts (.1667 in)
 with Minimum 1/8" bleed



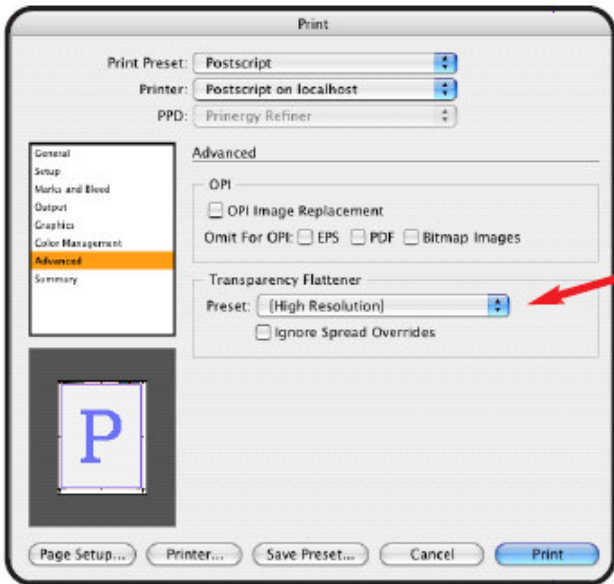
Color - Composite CMYK with
 Text as Black unchecked



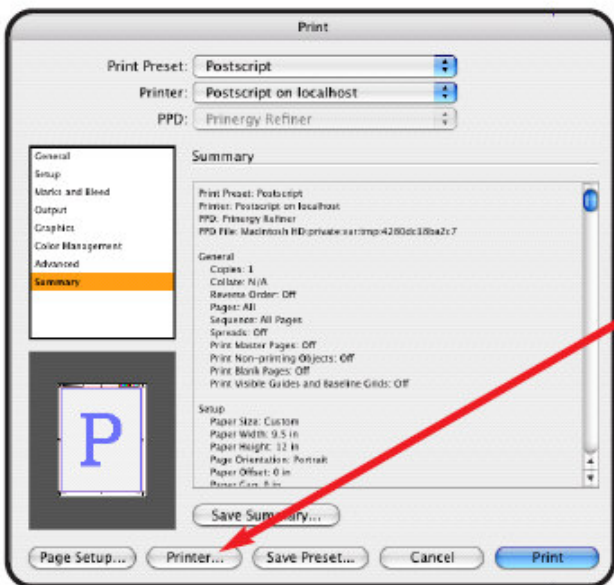
Send Data - All
 Fonts - Complete
 Postscript - Level 3



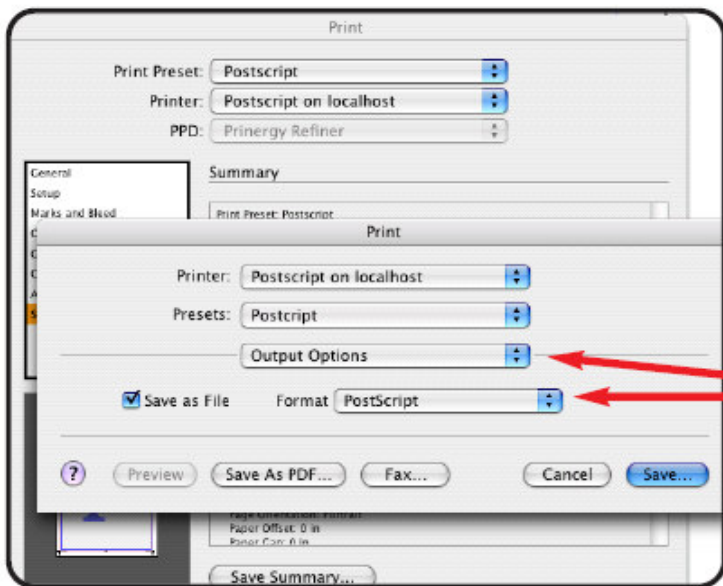
Color Management
Print Space Profile select Postscript®
Color Management



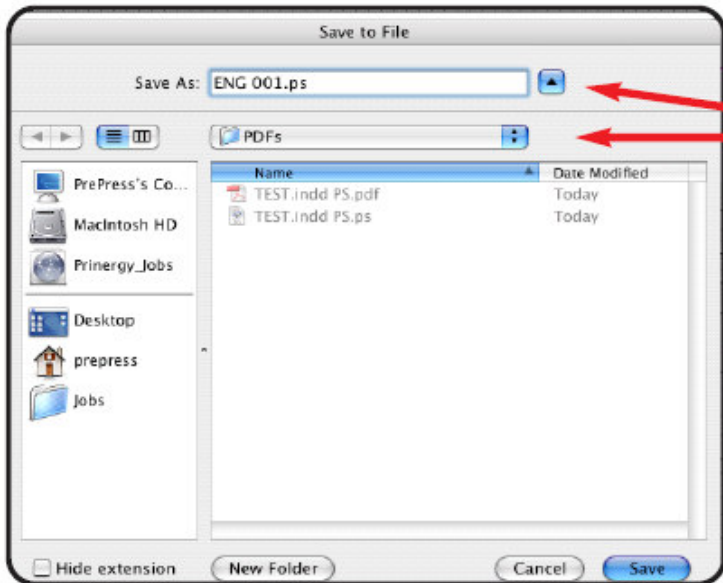
Transparency Flattener select
High Resolution



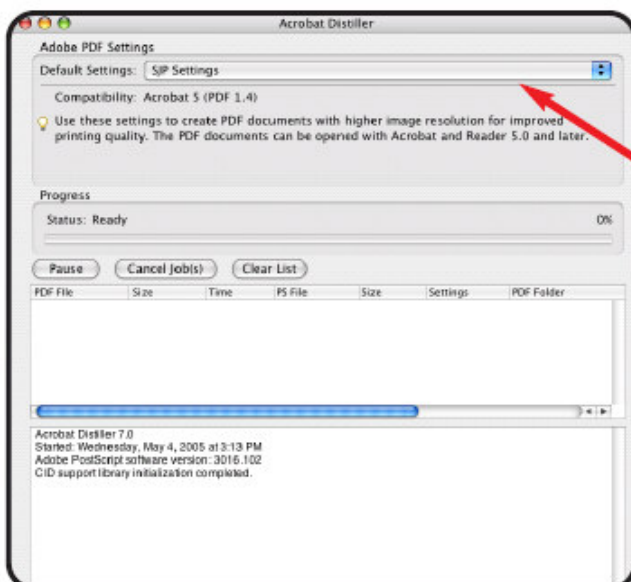
Select Printer



Under Output Options
Check Save as File, Format Postscript



Name File by Zone and then Page number
eg. ENG 001
Next select a destination folder



Take .ps file and drop on Distiller using
SJP settings